

CARDIOVIT AT-10 plus

Top Performance in Laptop Format!

The CARDIOVIT AT-10 plus has a famous ancestor. The legendary AT-10 introduced in 1993 was far ahead of its time. And it still is today. The „CardioLaptop“, the compact diagnosis station with its outstanding performance, has convinced more than 20,000 customers worldwide. It is even used in the international space station ISS.

Its unique concept is strictly continued with the AT-10 plus.

CARDIOVIT AT-10 plus - the long-term ECG solution

The AT-10 plus combines the basics of electrocardiography with the benefits of the IT world. It not only provides all functions of a high-quality 12-channel electrocardiograph but also meets the requirements of an integrated diagnosis workstation. Its brilliant communication concept makes the AT-10 plus an extremely flexible tool:

- As resting ECG station in clinics and practices
- As ergometry measuring station meeting highest demands
- As ECG terminal for mobile ECG recording
- As integrated recording station in a cardiological practice
- As cardiopulmonary diagnosis station for industrial medicine

The AT-10 plus convinces by its performance:

- Compact laptop design
- High-resolution colour display
- Integrated 12-channel ECG recorder for top quality ECGs
- Pacemaker detection
- Rechargeable battery for mobile use
- Resting ECG measurement
- SCHILLER Communication Module (SCM) for integration with practice systems or HIS



The CARDIOVIT AT-10 plus can be completed by proven software options according to your individual needs.

- Resting ECG interpretation for children and adults
- Thrombolysis software
- EXEC ergometry software (fully automatic ergometry, average cycles, ST measurement, rhythm recording, detailed report)



SCHILLER

www.schiller.ch

The Art of Diagnostics

Technical data CARDIOVIT AT-10 plus:

System:

Dimensions: 348 x 288 x 87 mm (w x d x h); approx. 4.2 kg

Power supply requirements: 100 - 115/220 - 240 VAC, 50/60 Hz; independent operation with built-in rechargeable battery

Power consumption: Max. 28 VA

Frequency range of digital recorder: 0.05 Hz - 150 Hz (IEC/AHA)

Patient input: Floating and isolated, defibrillation protected

Patient leakage current: < 5 µA

Control panel and keyboard: Easy to clean membrane keyboard

Standard interfaces:

- RS-232 (V24) serial interface
- SCM (SCHILLER Communication Module):
 - Ethernet
 - Internal modem (option)
- SD card slot
- VGA video connection
- QRS trigger output, TTL
- Interfaces for exercise testing: 3 x RS-232 for bicycle and treadmill ergometers as well as NIBP
- 1 DC input 0.5 V/cm, 1 DC output 0.5 V/cm

Leads: Up to 16 simultaneous leads: Standard/Cabrera/Neib, further lead combinations freely programmable by the user

Resting ECG printout 10 s:

- Listing of all ECG recording data, date and time of the recording, patient data
- ECG measurement results (intervals, amplitudes, electrical axes), average complexes with measurement reference markings

Exercise ECGs with final report:

- Automatic control of bicycle and treadmill ergometers (user programmable)
- Final report showing trendplots of heart rate, load and blood pressure, ST analysis realtime over all leads
- Enlarged QRS with ST measurement and selectable lead

Myogram filter (muscle tremor filter): Adjustable at 25 or 35 Hz

Sensitivities: 2.5/5/10/20 mm/mV, either automatically adjusted or manually selected

SF SCHILLER smoothing filter

SBS SCHILLER baseline stabiliser

ECG amplifier:

- Simultaneous, synchronous recording of all 13 active electrode signals (= 16 leads)
- Sampling frequency: 1000 Hz
- Digital resolution: 5 µV
- Dynamic range: ± 10 mV
- Max. electrode potential: ± 300 mV
- Frequency response: 0.05 - 150 Hz (-3 db)
- Pacemaker detection: > ± 2 mV/> 0.1 ms

Line frequency filter: Distortion-free suppression of superimposed 50 or 60 Hz sinusoidal interferences by means of adaptive digital filtering

Norms:

Safety standards: IEC/EN 60601-1; IEC/EN 60601-2-25; IEC/EN 60601-1-2 (EMC)

Protection class: I according to IEC/EN 60601-1 (with internal battery)

Applied part: CF according to IEC/EN 60601-1

Conformity: CE according to directive 93/42/EEC

Classification: IIa according to directive 93/42/EEC

Environmental conditions:

- Temperature, operating: 10° to 40° C
- Temperature, storage: -10° to 50° C
- Relative humidity: 25 to 95 % (non condensing)
- Pressure, operating: 700 - 1060 hPa

Display and printing:

Liquid crystal display (TFT colour LCD):

- Backlit for graphic and LCD alphanumeric representation
- Resolution: 800 x 600 dots

Paper speed: 5/10/12.5/25/50 mm/s

Chart paper: Thermoreactive, Z-folded, 14 x 21 cm

Printing process: High-resolution thermal printing, 8 dots/mm (amplitude axis), 40 dots/mm (time axis), @ 25 mm/s

Automatic lead programs:

- 3-, 6- or 12-channel representation on one or two forms size A4
- Average complexes of the 12 standard leads (25 or 50 mm/s) and 10 s rhythm strip (1 or 3 leads)

Recording track: 3 to 12 channels, positioned at optimal width on 200 mm, automatic baseline adjustment

Basic unit:

CARDIOVIT AT-10 plus with resting ECG and measurement program, pacemaker detection, ECG memory and resting rhythm recording

Accessories:

- 10-lead patient cable
- Standard 10-lead cable with clips or banana plugs available as electrode sets: disposable, clips or tabs
- 1 power cable
- 1 pack of printer paper
- 1 operating manual

Hardware options: Video monitor, bicycle, treadmill, instrument trolley, internal SCHILLER Communication Module (SCM) with built-in analogue modem (option)

Software options:

- Interpretation program C for resting ECGs
- Thrombolysis
- EXEC program for exercise ECGs:
 - Continual construction of average complexes, ST measurement, rhythm monitoring
 - Representation on the monitor of average complexes, ST amplitudes, performance data
 - The final report contains the following data: trendplots of workload, heart rate, blood pressure, ST amplitude and slope, average cycles of all leads from the individual test stages; detailed table of measuring results

Technical data are subject to changes without prior notice. No liability is assumed for pictures.

Asia

SCHILLER Asia-Pacific

10C, Jalan SS 3/33
Taman Universiti
47300 Petaling Jaya
Selangor, Malaysia
Phone +603 78 77 5336
Fax +603 78 77 5744
sales@schiller.com.my

Austria

SCHILLER Handelsgesellschaft mbH

Kampmüllerweg 24
A-4040 Linz
Phone +43 732 70 99-0
Fax +43 732 757 000
sales@schiller.at

C.I.S. & Russia

SCHILLER AG

Moscow Representative Office

Office 414, 1-st Yamskogo Polya street 15
125124 Moscow, Russia
Phone/Fax
+7 (095) 970 11 33,
+7 (095) 956 29 10
mail@schiller-ag.com
www.schiller-cis.com

France

SCHILLER Médical S.A.S.

4, rue Louis Pasteur
F-67162 Wissembourg/Cedex
Phone +33 3 88 63 36 00
Fax +33 3 88 94 12 82
info@schiller.fr

Germany

SCHILLER Medizintechnik GmbH

Rudolf-Diesel-Strasse 14
D-85521 Ottobrunn
Phone +49 89 62 99 81-0
Fax +49 89 609 50 90
info@schillermed.de

India

SCHILLER Healthcare India Pvt. Ltd.

D.C. Silk Mills Compound, «A» Wing, 1st floor
5, Chunawala Estate, Kondivitta Lane
Andheri-Kurla Road, Andheri (E)
Mumbai - 400 059, India
Phone +91 22 826 35 20
Fax +91 22 826 35 25
schiller@vsnl.com

Japan

SCHILLER Japan, Ltd.

Biomedical Research Building 218
1-2-3 Kasumi, Minami-ku
Hiroshima 734-8551
Phone +81 82 250 2055
Fax +81 82 253 1713
koji.maekawa@schiller.jp
www.schiller.jp

Spain

SCHILLER ESPAÑA, S.A.

Avenida Baviera, 12 - 14 Posterior
E-28028 Madrid
Phone +34 91 713 01 76
Fax +34 91 355 79 33
schiller@schiller-es.com

Switzerland

SCHILLER-Reomed AG

Riedstrasse 14
CH-8953 Dietikon
Phone +41 44 744 30 00
Fax +41 44 740 37 10
sales@schiller-reomed.ch

Turkey

SCHILLER Türkiye

Halil Rifat Pasa Mah.
Darülaceze Cadd.
Perpa Ticaret Merkezi
B/Blok No: 41 K: 2
Okmeydanı-Sisli - İstanbul
Phone +90 212 210 8681 (pbx)
Fax +90 212 210 8684
sales@schiller-turkiye.com

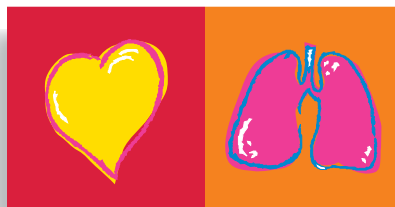
USA

SCHILLER America Inc.

11300 NW 41st Street
Miami, Florida 33178
Phone +1 786 845 06 20
Fax +1 786 845 06 02
sales@schilleramerica.com

Your specialist:

AEI Technologies, Inc.
520 East Ogden Avenue, Naperville, IL 60563
800-793-7751 Fax: 630-548-3546
sales@aeitechnologies.com
www.aeitechnologies.com



SCHILLER

www.schiller.ch

The Art of Diagnostics

Headquarters: SCHILLER AG, Altgasse 68, CH-6341 Baar, Switzerland, Phone +41 41 766 42 42, Fax +41 41 761 08 80, sales@schiller.ch